

MIRRORS

Silver Double Coated



Dr. Greiche
GLASS



Mission

Increasingly expanding in new markets around the world while continuously gaining our clients' confidence and loyalty

Delivering quality products that comply with and exceeds international standards; supplying the glass industry with a complete range of products.

Maximum flexibility in providing our services to meet the expectation of a fast changing world is our way of honouring our international customers.

Believing that our employees are the corner stones of our success; dr.greiche management is committed to providing challenging working conditions to all dr. greiches' personnel, so to achieve their maximum potential and growth



Vision

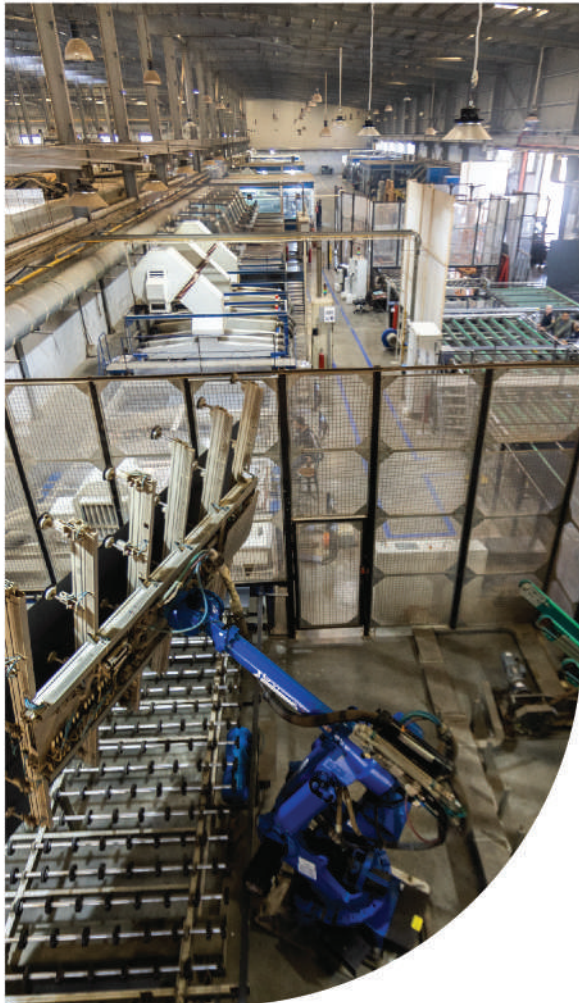
Our Vision is to be on forefront of the global glass processing market by exceeding customer expectations and providing trust through safety, reliability and durability without compromising aesthetics.

Our position as leaders in the region and as pioneers in the Middle East and Africa lifts our vision to higher sights; building a name that is synonymous with exceeding international quality standards.

Through the efforts of our dedicated team, this vision has come to fruition in the region with aims at creating the same image for the Dr. Greiche brand throughout the world.



Mirrors have been around for centuries, and are a popular decorative item in many homes. They can be used to add light and brightness to a room, to reflect a beautiful view or to create an illusion of space. But the uses of mirrors extend far beyond just decoration.



PROVIDING HIGH-QUALITY MIRROR SHEETS FOR YOUR NEEDS

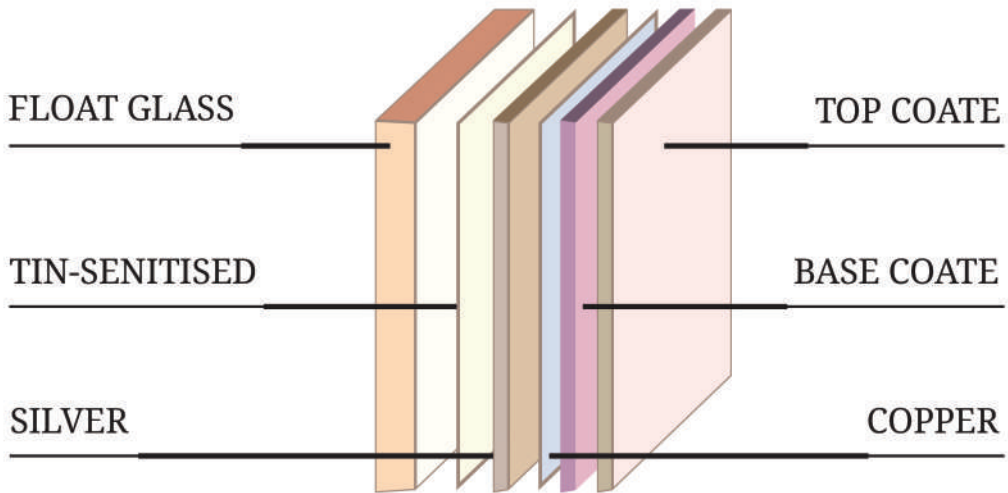
With over 30 years of experience in the industry, we have established ourselves as a trusted supplier of mirror sheets to customers around the world.

Our Mirror factory, DG5, has a daily capacity of 21,000 m. Our mirror sheets are coated with silver, copper, and it's double coated, and also provide copper-free mirror sheets by request.

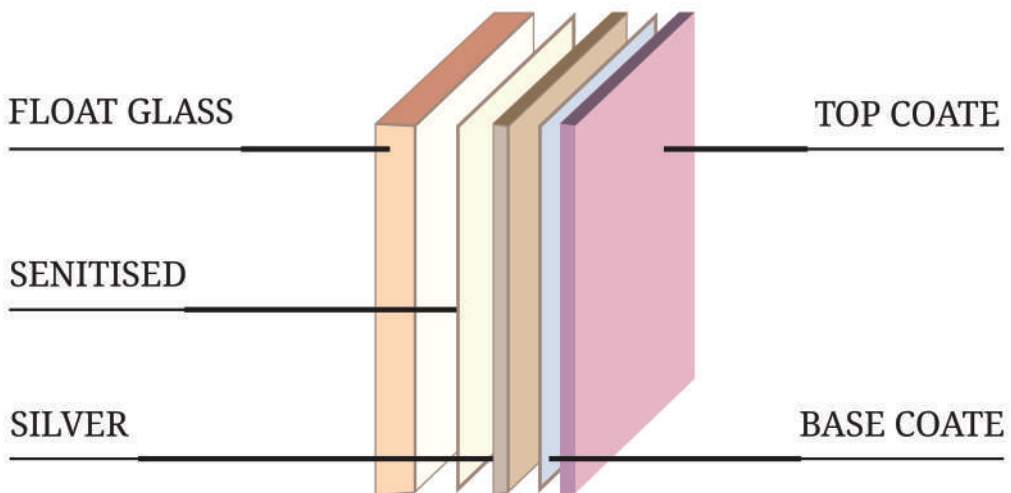




NORMAL MIRROR LAYERS



COPPER FREE MIRROR LAYERS





LOGISTICS & STAFFING

Our company possesses the expertise to efficiently deliver our products to customers worldwide through the utilization of superior shipping methods, particularly sea shipping. We employ various container options to optimize load capacity per shipment, partnering with reputable shipping lines to secure the most favorable pricing and exceptional service. Additionally, we prioritize the safety of our products by employing top-of-the-line packaging materials and employing meticulous staffing techniques to ensure their safe arrival at our customers' stores.



MIRROR TESTING

At Dr. Greiche Glass, maintaining a high level of quality is of utmost importance to us. Consequently, we continually conduct rigorous in-house and external tests in collaboration with a certified European laboratory. These measures are undertaken to uphold the stability of our quality standards, aligning ourselves with international benchmarks.

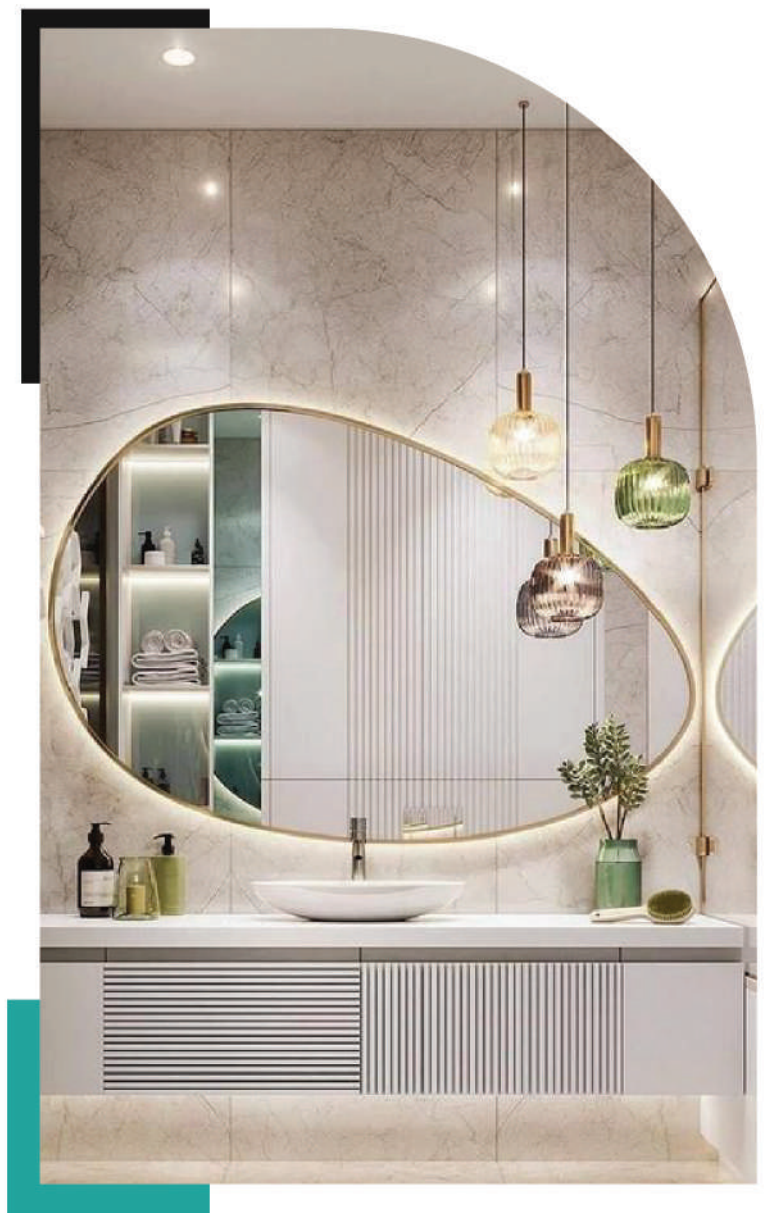


QUALITY & SPECIFICATION

Our production processes are fully automated, supplemented by human oversight to guarantee consistent quality. Our mirrors bear the CE certification, affirming their compliance with the most stringent safety and quality standards. Furthermore, our mirror products comply with the requirements of esteemed international standards, such as the American standard for float glass, ASTM-C1036, and the European standard PrEN-1036 2008 for mirror coating on clear mirror glass with thicknesses of 2.7, 3, 4, and 6 mm.

APPLICATIONS

We specialize in manufacturing mirror sheets ranging from 2.2 mm to 10 mm in thickness, with dimensions of up to 321X366. Upon request, we also provide customized cutting services to accommodate specific size requirements. Our mirror products are available in various shapes, enabling the creation of innovative dimensions for framed or unframed mirrors, wall cladding, and furniture items such as tables, cupboard doors, and shelves. Silver Mirror Production Dr. Greiche Glass Company produces silver mirrors using a double-coated technique, resulting in extraordinary clarity without distortion. The mirror coating exhibits exceptional resistance to humidity, adhering strictly to international specifications.





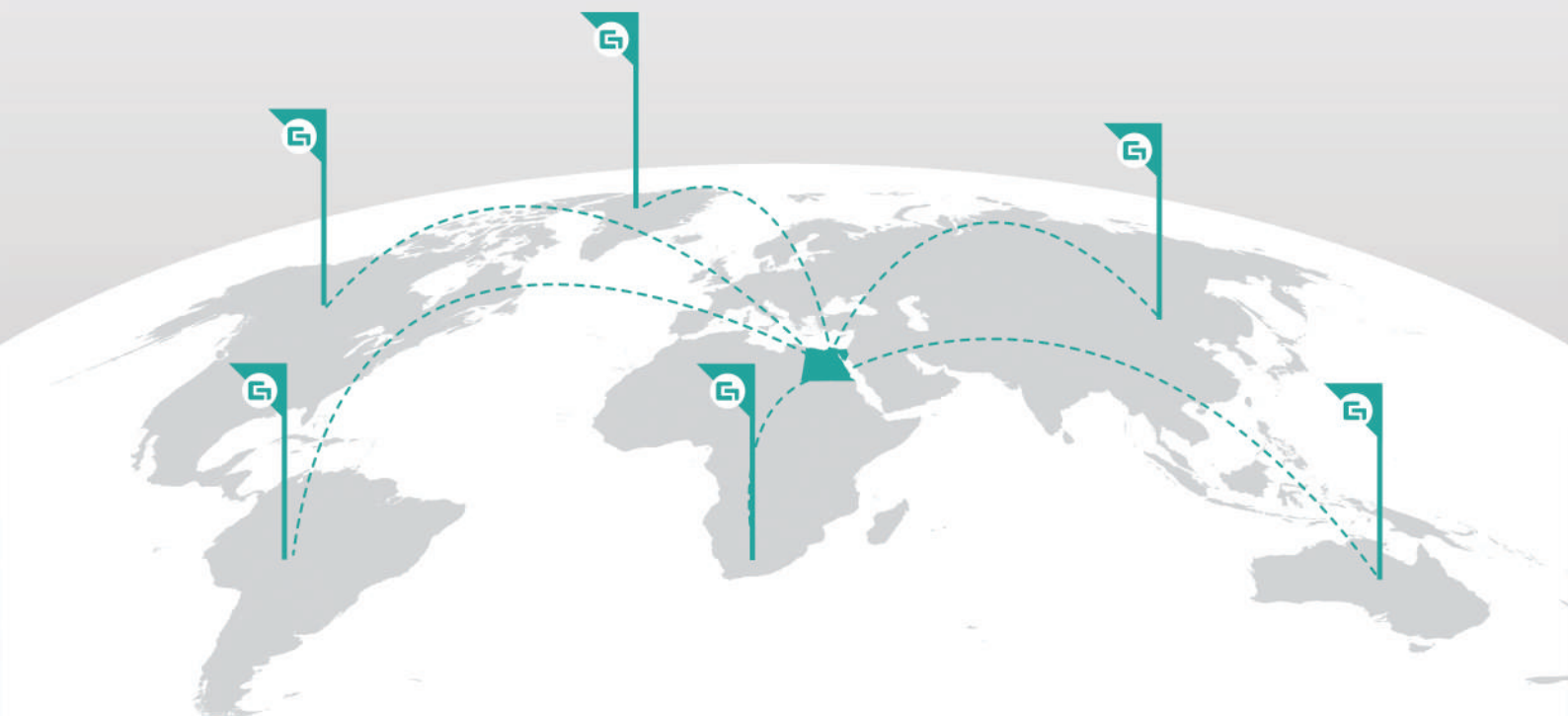
MIRRORS STANDARD SIZES

Thickness (mm)	2.7 MM	3 MM	4 MM	5 MM	6 MM
Sizes(CM)	160*80 160*240 225*160 225*121 225*200	225*160 244*183 321*200 321*214 321*225 321*240 321*255	225*160 321*200 321*214 321*225 321*240 321*255	321*200 321*214 321*225 321*240 321*255	321*200 321*214 321*225 321*240 321*255
Clear	✓	✓	✓	✓	✓
Extra Clear					By order
Bronze			✓		✓
Grey			✓		✓

Our mirror can undergo hole drilling, edge grinding and beveling, decorative face grooving and more. it can be also laminated for extra safety.

Dr. Greiche

trademark has reached more than **40** countries around the world.





WEBSITE

Address: 3rd Industrial Zone A1,
10th of Ramadan City, Egypt.

Tel.: 055 441 000 1 / 4 / 5

Fax: 055 4412 750

Mail: info@drgreiche.com

Hotline: 19864

www.drgreiche.com